

NEW: PATHS For You California - NEW: PATHS



Professionals Associated Through Human Services
Volume 8, Issue #4 Winter 2008

Have a Whale of a Time in San Diego, January 28 – 30, 2009

By: Donna Cobb & Sydney Crable

Come join us in celebrating 20 years of wonderful Annual State Training Conferences.

It will be held at the Crowne Plaza in San Diego. This conference, as with the prior ones, promises to be educational, enlightening, and enjoyable. Meet new friends and reminisce with old ones while finding out what is going on in other counties.

You may choose from a variety of workshops and share that information with others during the conference.

We plan on having workshops with subjects that will be of interest to all. Some examples are: Foster Care, Child Support, Fraud, Train the Trainer, Emergency Preparedness, MEDS Alerts, Supervision with a Heart, leadership, the new IPV State On-Line System, Financial Planning and Emergency Preparedness – Personal and Elderly, the Farm Bill, Medi-Cal, MEDS, Social Security, Child Support, Domestic Violence, as well as favorites from the past, Feathers In The Wind and C-IV, CalWIN to name a few. If you don't come you are going to miss out.

We plan to have three dynamic speakers, one for opening ceremony, one at the networking luncheon, and one at our closing ceremony.

San Diego is California's second largest city. Miles of stunning beaches, picture perfect weather all year round. The Crowne Plaza Hotel in San Diego provides their guests with a complimentary shuttle to the local trolley station and Fashion Valley Mall. You may want to come a day early and/or stay a day later to take advantage of and enjoy all that the San Diego area has to offer. The Crowne Plaza has offered to allow our conference prices for those days as well. See the Where to Go, What to Do for more area info.

We are looking forward to seeing our returning friends from Sacramento and other previous conferences, and meeting new friends this January in San Diego.

Hotel Information

By: Sarah Ross

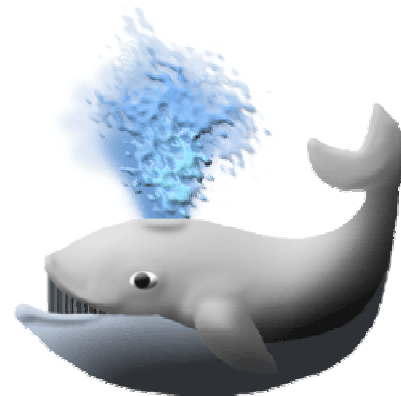
The San Diego Crowne Plaza is located on Hotel Circle North in Mission Valley. This beautiful hotel has many great amenities. It offers newly updated guest rooms, heated outdoor pool/spa, massage & spa services, a full service restaurant, bar and sushi bar.

The hotel has complimentary transportation services to Old Town San Diego, the San Diego Trolley Station, and Fashion Valley Mall.

All rooms include a coffee maker, hair dryer and ironing board. If you require a refrigerator for your medication, please request that when making your room reservation. Smoking rooms are also available upon request.

For those planning on coming early and or staying after for extra vacation time, the hotel is close to Sea World, San Diego Zoo, beaches, and the historic Gaslamp Quarter.

The hotel has laundry service, fitness center, and a barber shop. Centrally located off the I-5 and I-8 interchange, in the heart of San Diego, the hotel is only 10 minutes from the airport.



I look forward to seeing you at the Crowne Plaza San Diego.
2270 Hotel Circle North, San Diego, California
92108, (619) 297-1101 www.cp-sandiego.com

Table of Contents	
President's Message	2
Night Out With NEW: PATHS	2
Sponsors	2
Where to Go, What to Do	3
First Timers	3
Moderators	3
Eligibility Expert Game	3
Agency Tours	3
Ahoy Me Hardies	4
Directions to the Conference Site	4
2008 UC Davis Summer Institute	4
Fun(d) Raising	4
Nomination Form and Article	5-7
Networking Game	7
Membership Application	7
State Board Roster	8



President's Message

By: Debbie Spears

Our Twentieth California State Annual Training Conference "Have a Whale of a Time in San Diego" at the San Diego Crowne Plaza will be held January 28-30, 2009.

My board members have been busy working on the workshops, forums, and opportunities to help you build your own network of contacts.

There will be two evening receptions for you to network and socialize with the State Board members and other attendees from around the state.

The President's Reception will be Wednesday night where we have a surprise waiting for you. We will also play the 2nd Annual Eligibility Game after the reception, so put your thinking caps on!! On Thursday night, the board is celebrating our twentieth anniversary with a sit-down dinner and dancing. It is shaping up to be a black tie event so bring out those gowns and suits if you wish. Business attire is okay as well.

Although we look for ways to network and increase our contacts, our conference focuses on training. Please look at this newsletter's first article for more on that.

Do not forget to use the 2009 10% Discount Coupon for any returning 2008 conference attendees. You will find it on the back of the conference registration form in this newsletter. You can also access a conference registration form and other conference information on our website, www.calnew.com

We passed on this information to many of the directors at the Annual County Welfare Directors Conference this October. I had the privilege to talk to many of the county directors, assistant directors, deputy directors and program directors to build support for our organization in sending you, our members, to the State conference.

I hope I will see you in San Diego and look forward to having a "Whale of a Time" with you.

Night Out with NEW: PATHS

By: Sarah Ross

On Thursday, January 29th, the California State Board of NEW: PATHS invites you to join us in an evening of celebration as we mark our 20th Anniversary.

Picture yourself walking into a winter wonderland, decorated in silver crystal and white.

Since this is a special occasion, we are celebrating in Platinum style, so come in the

spirit of our celebration by wearing black, white and silver. Dress for the evening may range from business or dressy to semi-formal for the ladies: business, shirt & tie, sport coat, or even a tux for the men.

For our dinner we will be serving something new, a Chinese pork loin. The sampling was delicious; we know you will enjoy the meal. If you prefer an alternate meal, we thought of that also and will have a vegetarian selection available. Please request that on your registration form.

We will have a DJ, so bring your dancing shoes. Prizes and giveaways are being gathered, so many you won't leave empty-handed. We hope have thought of everything, and no, we did not forget the no-host bar.

As your Night Out With NEW: PATHS coordinator, I am looking forward to you having a wonderful time at and enjoying the evening and our chapter's 20th Anniversary Celebration!

A Big Shout Out to Our Sponsors!!!

By: Debbie Spears

Being a non-profit organization the California State Chapter of NEW: PATHS relies on the generous support of other organizations, businesses, and individuals associated with Human Services as we continue to work on providing value to our training conferences.

This support comes in various forms such as newsletter advertisements, vendor tables at our training conferences, training scholarships, and sponsorship of workshops, and functions at our conference. I would like to note the following sponsors who have already committed to support our 2009 Training Conference in San Diego: Yvonne Lannon with Medi-Cal Solutions, Social Service Coordinators and NorthWoods. This support is greatly appreciated.

If you are interested or know someone who is also interested in lending support to our organization please contact Debbie Spears at 661-631-6467 or email at spearsd@co.kern.ca.us.

Where to go? What to do?...

By: Daniel Cerna

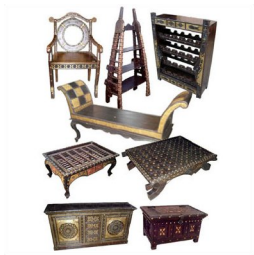
Welcome to the 20th Annual Training Conference here in San Diego! Need to know where to go before or after the conference? Wondering how to spend your extra time when you're all dressed up with nowhere to go? So... are you new in town and need to know where to get something to eat? Is shopping your past time? Want to catch some sights? Well... you are in luck! The Crowne Plaza is located just minutes

away from Old Town San Diego and many other attractions. Shuttles are available from the hotel.



Old Town is where you can find food, shopping, sight seeing tours, and lots of fun, just to name a few. Plenty of local artists sell their artwork there. Maps are available to just about anywhere else in town you may want to visit!

Speaking of places, did you know that just five minutes away from our hotel is Balboa Park? This is where the art museum, space museum, history museum, culture centers, outdoor concert pavilions AND the world renown San Diego Zoo is located! In the Zoo you will find amongst the many beautiful animals, the famous Panda Bear collection!



Follow the same road as the zoo, and it will lead you right into Antique Row, where you can find a collection of antique shops, old fashion eateries, music shops that sell old records, and much more!

Don't forget, this is the edge of the continent! Coronado Island, beaches, surf spots and bicycle paths line the coastal area of this vicinity. Minutes from our hotel you can find shopping malls, movie theatres, bowling alleys, golf courses, and plenty of sun! Don't forget your sun tan lotion! NEW: PATHS is so lucky and grateful to be hosting their 20th Annual Training Conference in sunny San Diego!

First Timer's Orientation

By: Connie Villalobos

You want to have a great experience at our conference and want to know how to do it? Come and join us at the First Timer's Orientation the following days: Tuesday evening and Wednesday morning.

We will provide you with valuable information regarding the workshops available and daily events in order for you to plan your schedule and make the most out of it. Our objective is to give you an overview of the conference, provide you with hints, tidbits and answer all of your questions.

This will be a great opportunity for you to meet other attendees and network. We want you to start the conference with all the information you will need to have a great experience.

Workshop Moderator Opportunity

by Phil Luckner

If you have not previously taken advantage of being a workshop moderator at a NEW: PATHS training conference, you have missed out on a great opportunity. Those who have been moderators can tell you they had the pleasure of interacting with the presenter(s) on a closer basis, they met and networked with workshop attendees and they enhanced their skills in the areas of meeting preparation and organization.

Being a moderator is another way your involvement with NEW: PATHS benefits you.

Please attend one of the Moderator Meetings on either Tuesday night or Wednesday morning at the conference and cash in to those benefits.

Eligibility Expert Award! 2nd Annual Contest

By: Cesar Vera

With just a few months until our annual California NEW: PATHS conference in San Diego, it's time to get ready for the 2nd Annual "Eligibility Expert" Contest.

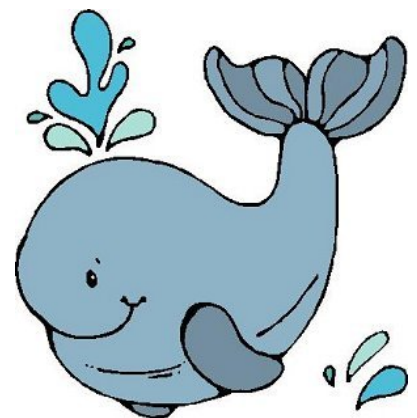
The contest will be a fun yet challenging game requiring contestants to answer a variety of questions with increased difficulty as they advanced through the rounds. The questions will not pertain to individual county policies and/or procedures. An award will be presented to the individual/team at our closing ceremony and they will hold the title of "Eligibility Expert" until the next conference. So, brush up on your eligibility and bring this title back to your county!

Agency Tours

By: Debbie Spears

One of the additional benefits to our training conferences has been the ability to see offices in the counties where the conferences are held. We ran out of room for the agency tours in Bakersfield and Sacramento. The response was overwhelming and we heard you in your evaluations.

We are working with San Diego County to arrange agency tours in their nearest facility. If available, please sign up at Registration before we run out of room again.



Ahoy Me Hardies!

By Angie Gonzalez

Can you believe that we will soon be landing on the shores of San Diego for our next NEW: PATHS 20th annual conference? It seems yesteryear that we came aboard this here ship. For those of you rejoining the crew, and you newcomers, a Hearty Welcome Aboard! The one darn thing that never fails when we land on any shore, we seem to lose some of our crew members to the shore. So we will be doing a diligent search for those darn missing landlubbers. So get your walking shoes, compasses and eyeglasses to help in the search.

Ahoy, Matey's! We will meet you aboard the USS: NEW: PATHS, docking January 28, 29 and 30, 2009, at the Crowne Plaza of San Diego.

Directions to "Have a Whale of a Time in San Diego" in San Diego

By Debbie Spears

From the Airport:

San Diego International Airport/Lindbergh Field- Take I-5 North to Highway 8 East and then exit at Taylor Street. Turn left at the signal light, Hotel Circle South and then left again at the stop sign, Hotel Circle Dr. A quick right will take you to Hotel Circle North and the Crowne Plaza San Diego Hotel. The hotel does provide shuttle service for a fee (\$13.50 one way) and a taxi will cost approximately \$20.

By Train:



Amtrak will take you to the Santa Fe Depot where you can take a taxi to the hotel for approximately \$15.00. The Sante Fe Depot is located at 1050 Kettner. Take a right onto West A Street and turn

left on 1st Avenue. Merge onto I-5 North and then merge onto I-8 East. Exit at Taylor Street. Turn left at the signal light, Hotel Circle South and then left again at the stop sign, Hotel Circle Dr. A quick right will take you to Hotel Circle North and the Crowne Plaza San Diego Hotel.

By Car:



Coming up from I-5, going North: Take I-5 North to Highway 8 East and then exit at Taylor Street. Turn left at the signal light, Hotel

Circle South and then left again at the stop sign, Hotel Circle Dr. Drive over the bridge and turn left at the light. A quick right will take you to Hotel Circle North and the Crowne Plaza San

Diego Hotel. Going South: Take I-5 South to Highway 8 East and then exit at Taylor Street. Turn right at the signal light, Hotel Circle South and then right again at the stop sign, Hotel Circle Dr. A quick right will take you to Hotel Circle North and the Crowne Plaza San Diego Hotel.

UC Davis Summer Institutes

By: Sydney Crable

At this coming conference, January 28 – 30, 2009, in San Diego, CA, your name could be announced as a winner to one of the Summer Institutes held at UC Davis Extension.

So I know you are asking yourself, what do I need to do to qualify? It is easy, all you need to do is submit an essay of 100 words or less on "What NEW: PATHS Means to Me". Anything over 100 words will be discarded. You must be a current member of NEW: PATHS for one complete year at the time of submission. The UC Davis staff will read the essays and announce the winners at the conference. The deadline for this essay is December 15, 2008.

You must keep in mind that the State Chapter does not pay for anything. You must coordinate the travel and time to attend with your immediate supervisor/manager. The Institutes run for one week. Your meals and lodging are part of the package. Workshops run from 8:30 AM until noon and again from 1 to 4:30 PM each day that you attend. The last session is on a Friday morning and the program ends following lunch that day. This is a perfect opportunity to network and to develop yourself professionally. The institutes are held each year in July and August at the UC Davis Extension campus in Davis, CA.

The workshops expected to be available to participate in are: Eligibility Worker, Eligibility Supervisor, Employment Services and Welfare to Work, Clerical and Adult Services.

See you at the Conference!

Fun(d) Raising!

By: Dee Blankenship

While at the conference be sure to stop by our Fundraising table to pick up a few goodies for your family, friends and co-workers. We plan to have talking "thank you" pens, 2-sided pens (one side is happy face and one side not so happy), LED pens, a new lightweight "green" tote bag for all your goodies that may not fit in your conference bag, and a day planner for keeping track of all those important NEW: PATHS occasions. Our items are not only fun and reasonable, but the profit made is used to enhance future conferences. We hope to see you there!



Nomination Form

Resume for Nomination to the California State Board of Directors

Name: _____

Address: _____

Home Telephone: (____) _____ Agency Telephone: (____) _____

E-Mail Address: _____

Agency Name: _____

Agency Address: _____

Current Position/Title: _____

Current Job Description: _____

Date Joined NEW: PATHS: _____

NEW: PATHS Involvement (What kind of participation? Conferences attended? Chapter Involvement?):

Your Vision for NEW: PATHS: _____

What can you contribute as a State Board member? _____

Form Continues on the next page

Statement for inclusion on the ballot (100 word maximum; longer statement will be reduced to the first 100 words verbatim)

Please provide two references that have knowledge of your NEW: PATHS involvement
(Cannot be a current State Board member)

Name: _____ Title: _____

Home Telephone: (____) _____ Agency Telephone: (____) _____

Name: _____ Title: _____

Home Telephone: (____) _____ Agency Telephone: (____) _____

Send this resume, postmarked by January 21, 2009, to:

Phil Luckner
1258 W. Montrose St.
Bloomington, CA. 92316

For more information on the responsibilities and activities of the California State Board or on completing this resume, call or email any member of the Board.

If submitted at the Conference, due by January 30, 2009 at 10 am.

Nomination/Credentials Committee Members:

Phil Luckner (909) 891-9184 or pluckner@hss.sbcounty.gov

Donna Cobb (209) 468-1440 or dcobb@co.sjgov.org

Connie Villalobos (760) 956-4527 or cvillalobos@hss.sbcounty.gov

California NEW: PATHS State Board Nominations

By: Phil Luckner

It's nomination time again. We are looking for committed individuals wanting and willing to share their talents and skills. In return you will have an opportunity to build on your experience and enhance your skills in the areas of teamwork, problem solving, leadership and many other areas. You will also be a part of putting together the Annual State Training Conference. This year we currently have seven Board positions up for election.

To be eligible, you must be a current member for one year prior to January 31st of the election year. You cannot have a current Board member sign your nomination as a reference. If elected by your peers, you will be seated to fill one of the available Board positions.

The Board meets four times a year, which requires travel throughout California. We share rooms with other Board members. You would be responsible for your own transportation, lodging and meals, unless your County pays for the costs. These expenses are tax deductible.

We have several committees you can select to serve on and volunteer for assignments as needs arise.

We enjoy working together throughout the year to provide you with the best conference experience we can. Serving on the Board is fun,

but it does come with responsibility. So, if you don't mind a little work while you are having a good time, we encourage you to fill out the form included in this newsletter. Make sure it is postmarked by January 21, 2009. If you plan on attending the conference, you can submit your nomination form in person at the Conference up until 10 AM on January 30, 2009. See you in San Diego.

Networking Game

By: Phillip Fincher

When you register at the San Diego Conference you will receive a map of the state of California with all the counties outlined but not the names of the counties. Your task is to find a person from that county to sign off on your map.

The Membership Committee will randomly choose 2 members who got the most confirmed contacts to receive a 1 year membership in NEW:PATHS. You will get a certificate and a membership form that must be turned in before April 30, 2009. See you in San Diego.

Important Reminder!



Please contact your local Board when you have moved to another location so you don't miss out on your next issue of the newsletter.

Newsletter Staff

Editor: Phil Luckner

Proof Reading: Debbie Simpkins and Diane Krebs

National NEW: PATHS Membership Application

Your Name _____

Your Email Address _____

Billing Address _____

City, State, Zip _____

Telephone _____

Agency Name _____

Address _____

City, State, Zip _____

Work Phone _____

Job Title _____

Membership Type Circle one Individual Associate

Rate Circle one 1 yr - \$35 3 yrs - \$90 5 yrs - \$140

email address: new@nationalnew.org

Website: <http://www.nationalnew.org>

Please make check payable to: NEW, PO BOX 371, PAW CREEK, NC 28130-0371

California NEW: PATHS

DEBBIE SPEARS '09
President
(661) 631-6467 W
Kern Co DHS
spearsd@co.kern.ca.us

DONNA COBB '11
Vice President
(209) 468-1440 W
San Joaquin Co HSA
dcobb@co.sjgov.org

SARAH ROSS '09
Secretary
(661) 633-7394 W
Kern Co DHS
rosss@co.kern.ca.us

BILL KNIGHT '09
Treasurer/
National Board Member
(925) 602-9486 W
Contra Costa Co DSS
bknight1@ehsd.cccounty.us

DEBBIE J SIMPKINS
Past-President
Retired State Member-At-Large
(909) 862-2296 (H)
ddsimpkins@earthlink.net

CESAR VERA '10

California - NEW: PATHS

P O Box 1612
Bakersfield, CA 93301

Have a Whale of a Time
In San Diego
January 28-30 2009



(209) 617-0768 W
Merced County HSA
cvera@hsa.co.merced.ca.us

KATHY WATKINS '11
(760) 924-1793 W
Mono County DSS
gkwatkins@aol.com

DEE BLANKENSHIP '09
(916) 876-7550 W
Sacramento Co DHA
blankenshipd@saccounty.net

ALICIA CORRELL '10
(209) 468-1486 W
San Joaquin Co. HSA
acorrell@csjgov.org

SYDNEY CRABLE '11
(831) 454-4105 W
Santa Cruz Co HRA
Sydney.Crable@hsd.co.santa-cruz.ca.us

PHILLIP FINCHER '09
(209) 558-2339 W
Stanislaus Co CSA
Fincherp@co.Stanislaus.ca.us

Visit us on the web:
www.calnew.com

ANGELICA GONZALEZ '10
(661) 631-6864 W
Kern Co. DHS
gonzalan@co.kern.ca.us
DIANE KREBS '09
Retired State Member-At-Large
(916) 723-4534 H
fdkrebs@jps.net

PHIL LUCKNER '11
(909) 891-9184 W
San Bernardino Co. HS
pluckner@hss.sbcounty.gov

PATSY MERAZ '10
(209) 468-1357 W
San Joaquin HSA
pmeraz@sjgov.org

LAURA SHULTZ '10
(909) 386-9693 W
San Bernardino Co. HS
lshultz@hss.sbcounty.gov

CONNIE VILLALOBOS '12
(760) 956-4053 W
San Bernardino Co. HS
cvillalobos@hss.sbcounty.gov

DANIEL CERNA '12
(916) 876-8090 W
Sacramento Co DHA
cernad@saccounty.net